



Inspection

Airbag module

If any improper parts are found during the following inspection, replace the airbag module with a new one.

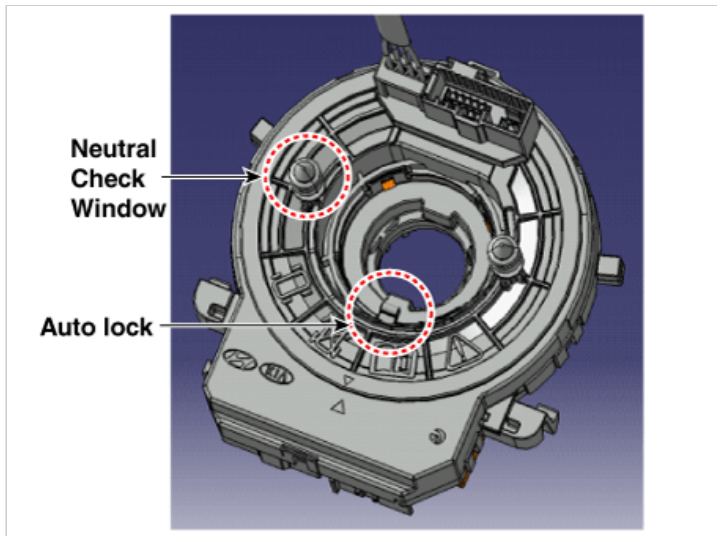
⚠ CAUTION

Never attempt to measure the circuit resistance of the airbag module (squib) even if you are using the specified tester. If the circuit resistance is measured with a tester, accidental airbag deployment will result in serious personal injury.

1. Check pad cover for dents, cracks or deformities.
2. Check the airbag module for dents, cracks or deformities.
3. Check hooks and connectors for damage, terminals for deformities, and harness for binding.
4. Check airbag inflator case for dents, cracks or deformities

Clock Spring

1. If, as a result of the following checks, even one abnormality is discovered, replace the clock spring with a new one.
2. Check connectors and protective tube for damage, and terminals for deformities.



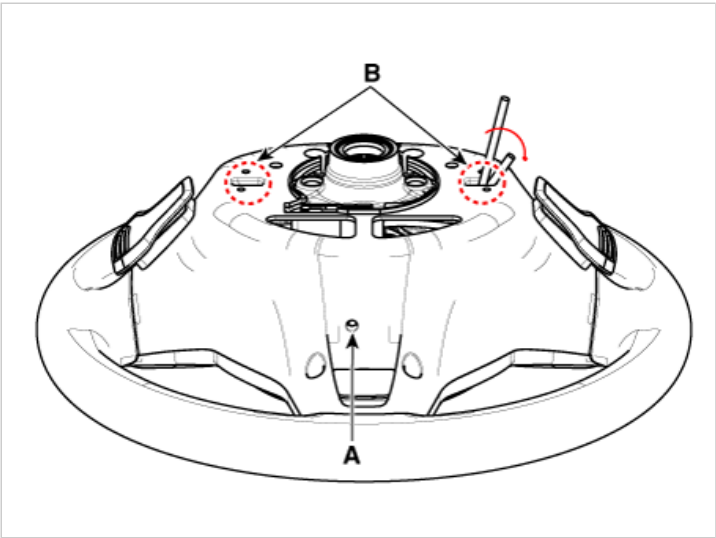
Removal

1. Set the front tires straight-ahead before assembling the steering wheel.

⚠ CAUTION

If the steering wheel and the front tires are not set straight ahead together, it may affect the number of circulation of steering wheel and damage the cable inside the clock spring.

2. Disconnect the battery negative terminal, and wait for at least three minutes before beginning to work.
3. Remove the driver side airbag module.
Insert a tool into the lower hole (A) and then rotate both sides of the tool (B) in the direction of the arrow to release it.



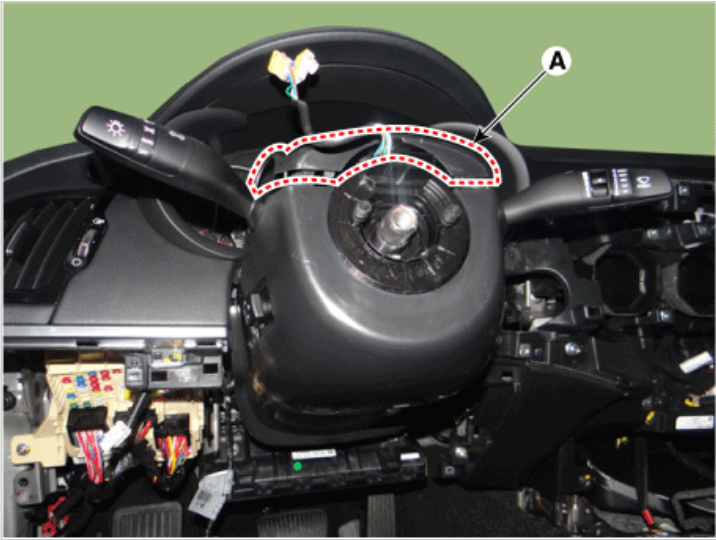
4. Disconnect the airbag connector (A) and horn connector (B).



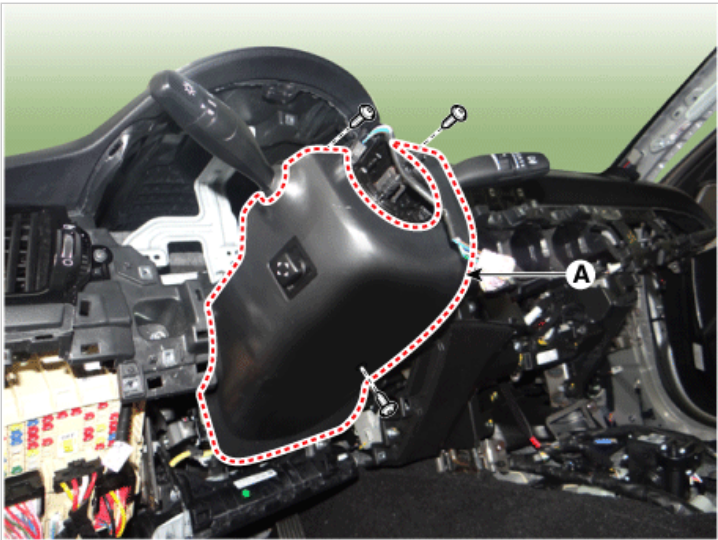
CAUTION

The removed airbag module should be stored in a clean, dry place with the pad cover facing up.

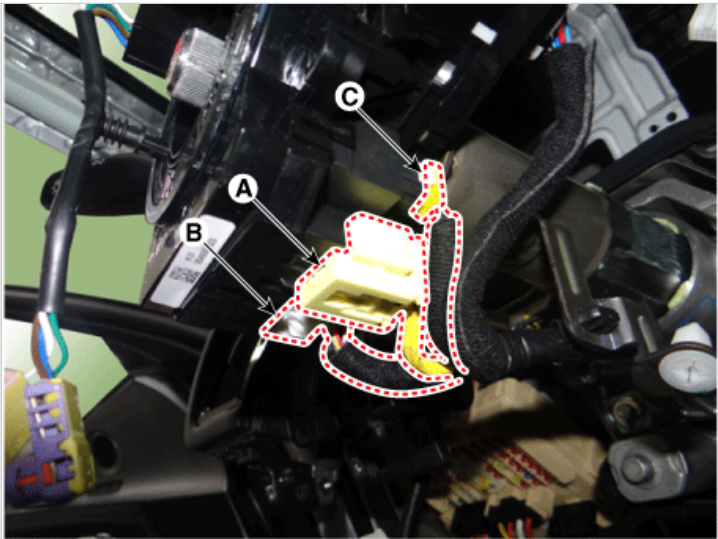
- 5. Remove the steering wheel.
(Refer to Steering System - "Steering Wheel")
- 6. Remove the upper steering wheel column shroud (A).



7. Loosen the screws and remove the lower shroud (A).




8. Separate the clock spring wiring harness connector (A) and the horn wiring harness connector (B) from the clock spring.



Installation

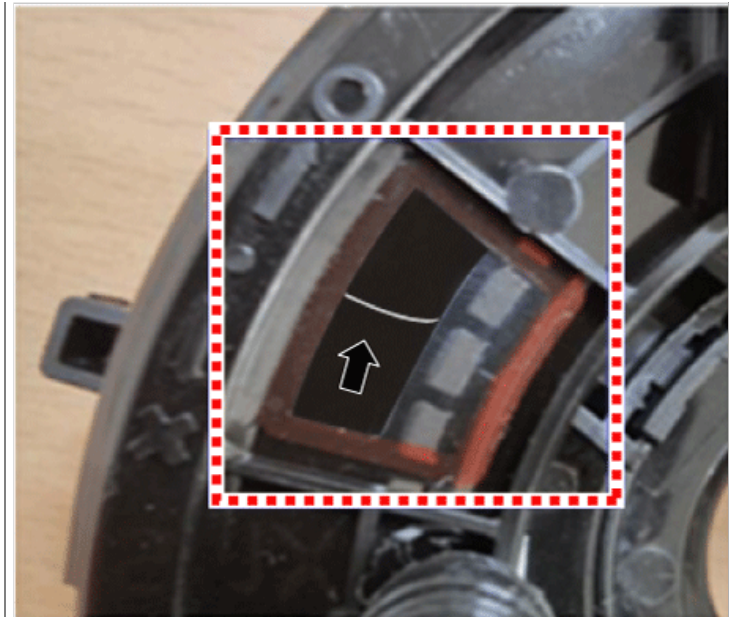
1. Set the front tires straight-ahead before assembling the steering wheel.

**CAUTION**

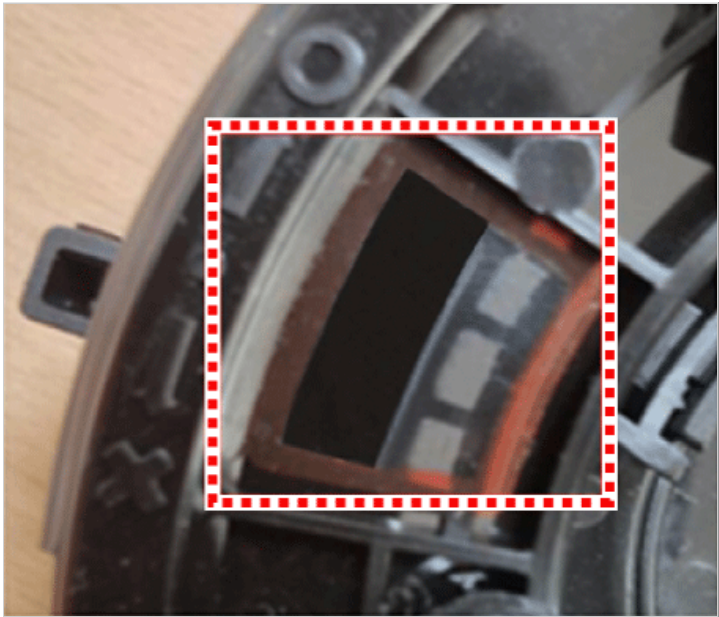
If the steering wheel and the front tires are not set straight ahead together, it may affect the number of circulation of steering wheel and damage the cable inside the clock spring.

2. Connect the clock spring harness connector and horn harness connector to the clock spring.
3. Factory setting for the clock spring is neutral.
- (1) If white cable is visible through the Neutrality Checking Window on 10 o'clock position of product, the spring is at neutral.
- (2) If white cable is not visible through the Neutrality Checking Window on 10 o'clock position of product, then manually adjust the setting to neutral.

| Neutrality checking window : Normal | Neutrality Checking Window : Faulty |
|-------------------------------------|-------------------------------------|
| | |



White cable is visible through Neutrality Checking Window on 10 o'clock position.

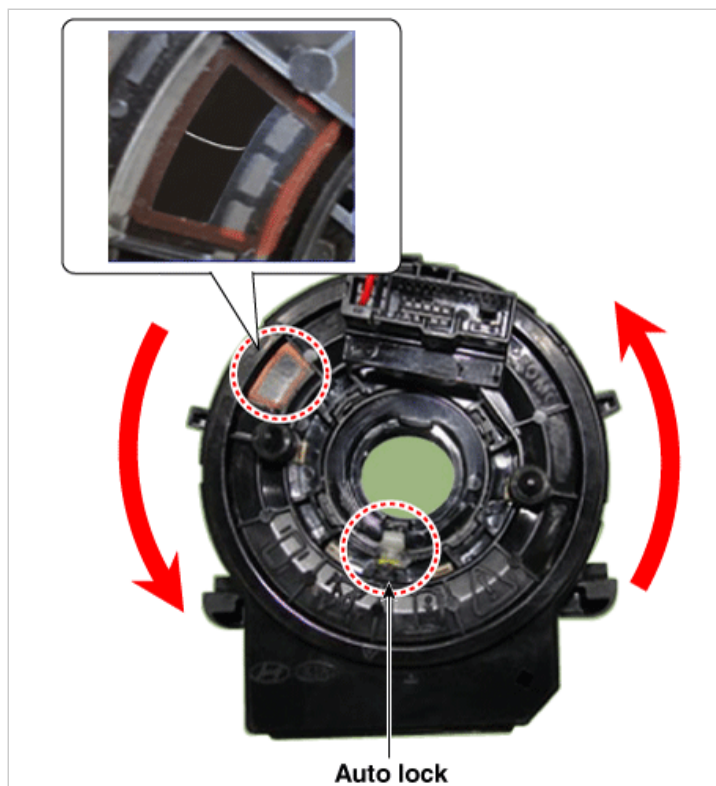


White cable is not visible through Neutrality Checking Window on 10 o'clock position.

4. Manual neutrality setting procedure of clock spring
(1) Press the Auto Lock at 6 o'clock and make 3 clockwise rotations.



- (2) Press the Auto Lock at 6 o'clock and make 3 counter-clockwise rotations.
(3) If white cable is visible through the Neutrality Checking Window on 10 o'clock position, then the spring is set to neutral.



5. Install the steering wheel column shroud and the steering wheel.
(Refer to Steering System - "Steering Wheel")
6. Connect the Driver Airbag (DAB) module connector and horn connector, and then install the Driver Airbag (DAB) module on the steering wheel.
7. Connect the negative battery terminal.
8. After installing the airbag, confirm proper system operation:
 - Switch "ON" the ignition. The SRS indicator light should turn on for about six seconds and then off.
 - Make sure that horn button works.